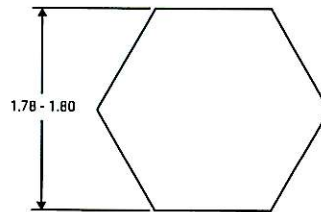
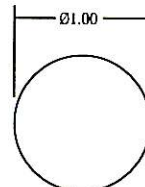
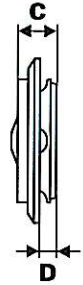
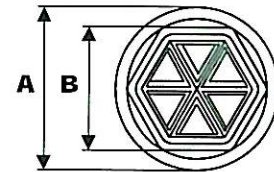


# New Product Innovations

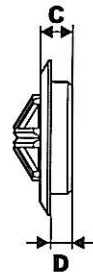
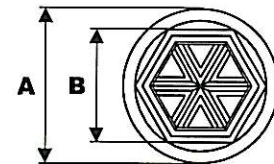
## Foam Fill Hole Plug



Hole Preparation  
1814-00



Hole Preparation  
1819-00



Part Number	Part Description	Material	Dimensions			
			A	B	C	D
1814-00	Large Foam Fill Plug	LDPE, Natural	2.35	1.76	0.580	0.340
1819-00	Small Foam Fill Plug	LDPE, Natural	1.20	0.94	0.347	0.287

### Features:

- ★ Excellent filling and sealing plug for foam injection applications.
- ★ Pie-Wedge design allows filling tool to be inserted after hole plug is put in place
- ★ Removing filling tool causes the interlocking wedges to close and seal trapping foam.
- ★ No clean-up or secondary operation is necessary
- ★ Available in both a large 1/12 turn and a small snap-in style.

195 E. Algonquin Road  
Des Plaines, IL 60016  
Phone: 847 299-2222  
Fax: 847 390-8727  
E-mail: sales@itwfastex.com

**ITW** Fastex®  
www.itw-fastex.com