



ISO 9001 : 2000 CERTIFIED

Designers & Manufacturers Of

Knobs, Handles & Cases

Custom Plastic Components



Toll Free: 800-544-9208

· www.daviesmolding.com

· email info@daviesmolding.com

Yesterday & Today

Yesterday



In 1933, the Harry Davies Molding Company began with only seven molding presses and three punch presses, located in downtown Chicago. The small, single-room company was started during a time when the economy was depressed and work was scarce. Yet with hard work and determination, Davies Molding soon established strong roots as a quality plastic molder. During the 1940's, Davies Molding became a supplier of phenolic plastic components for the World War II war effort. Afterwards, it expanded it's capabilities and has thrived ever since.



Today



In the fall of 1991, Davies Molding moved to its current location in Carol Stream, Illinois to further enable its expansion. The 99,000 square foot factory houses injection and compression molding machines that range in size from 25 to 500 tons. Currently we operate:

- Forty (40) thermoset compression molding machines
- Five (5) thermoset injection molding machines
- Twenty-four (24) thermoplastic injection molding machines.

Insert Molding Expertise

Davies specializes in loading inserts (threaded fasteners) directly into components as plastic solidifies around the mounting. This process maximizes torque strength for demanding requirements. We stock thousands of inserts to minimize lead times, including both screw-machined parts and cold-headed studs.



Insert Types:



THREADED INSERT

Standard Material: Brass, steel, or zinc-plated



THREADED INSERT THRU-HOLE

Standard Material: Brass, steel, or zinc-plated



BUSHING

Standard Material: Brass, steel, or zinc-plated



PROJECTING STUD

Standard Material: Steel, stainless steel, or zinc-plated



HEX NUT

(Standard or Nylon Locking Ring)
Standard Material: Steel, or zinc-plated



SET SCREW (Slotted or Socket)

Standard Material: Steel, zinc-plated, or black oxide finish

Products & Services

Standard Knobs, Handles and Cases



Davies owns an extensive range of tools and molds that have been designed to give our knob customers the widest selection of styles and mountings available. With over 600 products and 9000 variations in size, shape, color and molded-in metal threaded inserts, Davies can supply top quality parts engineered to meet virtually any customer requirement. Our parts are produced utilizing both compression and injection molding equipment using the highest quality thermoset and thermoplastic materials. Families of parts can be described as clamping, instrument, pointer, control, ball, lever, tapered, two point, soft touch, and two-shot.



We also have a wide variety of multipurpose handles available in various finishes, materials and shapes to accommodate virtually any grip requirements. No matter the need for a plastic, nickel, stainless, aluminum or chrome handle, you will find it at Davies.



Davies Molding offers a selection of instrument cases and covers for the electrical, hardware and mechanical industries. These enclosures, as well as most Davies' products, are available in phenolic materials, incorporating high heat, mar and scratch resistance. The cases can also be ordered in an impact resistant ABS material. Please download our catalog today at www.daviesmolding.com/catalog/default.html or request one by phone.



Specials & Value-Added Services



At Davies, we know that not every application is well suited for a standard part. That's why we offer "specials" where a different insert may be required or perhaps a secondary operation added. Most of our parts can be customized to meet your specific needs and requirements. Parts can be modified by color, finish, material, size, insert type, and more.



Davies offers the following secondary operation:

- Drilling
- Machining
- Turning
- Ultrasonic Welding
- Buff and Polish
- Tapping
- Sand Blasting
- 3-D CAD Imaging
- Plating
- Vacuum Metalizing



- Hot Stamping
- Pad Printing
- Engraving
- Branding
- Paint Fill
- Decorative Pointers
- Decorative Inlays
- Paint Coatings
- Silk Screen, Plating
- Custom Color Matching



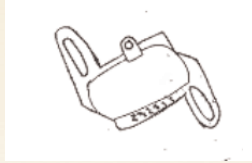
- Packaging
- Bagging
- Assembly
- Kitting



All requests are important to us and we will find a way to fulfill your unique requirements. You can send requests to info@daviesmolding.com or give us a call.

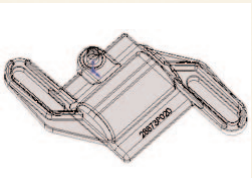
Custom Molding

Concept



Every great idea, no matter how simple or complex, has to start somewhere. Whether you are looking for cost savings on an existing part, or have a brand new product idea, our engineers can make it happen. At Davies Molding, we are more than just molders - we are solution providers for all of your plastic component needs.

Design



Based on your input, our engineering staff will help you create the exact look, feel, and dimensions of your ideal plastic part. Utilizing the latest CAD and 3-D modeling software, we can easily make changes to be sure the part will meet your specifications. Our engineers will lead the design into production by ensuring that high quality molds and tools are created to produce the best custom molded part for your needs.

Prototype

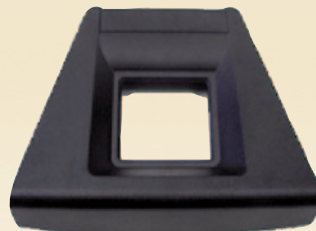
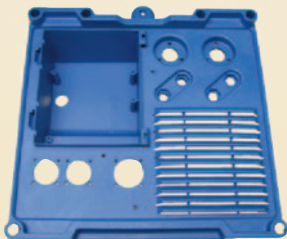


Your concept will come to "life" as it is transformed into a 3-D image. By specifying colors, materials, drilling or other operations, you can digitally view the entire part from any perspective. We can provide rapid prototypes so that real examples of parts can be evaluated before cutting tool steel.

Production

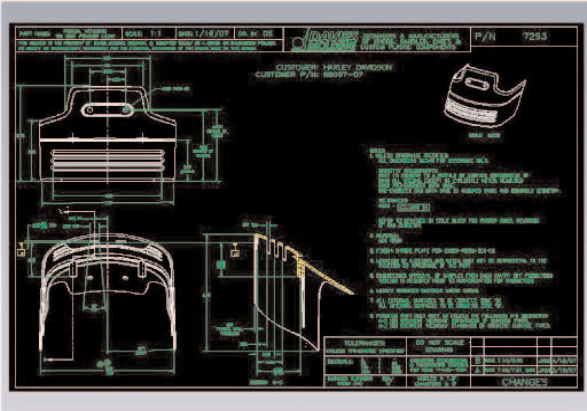


At Davies, we understand that quality and on-time delivery are essential to your business. We'll provide you with a first class product that will stay within your budget. After your product is finished, the service doesn't stop there. We can ensure that parts can be ordered at any time, at any quantity you choose. We will work with you to ensure that your product is made with the quality and care that is needed for continued success.



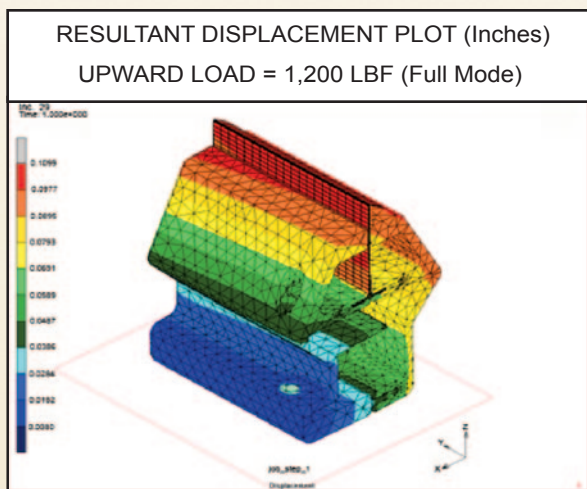
Engineering & Tooling

3-D & CAD Modeling



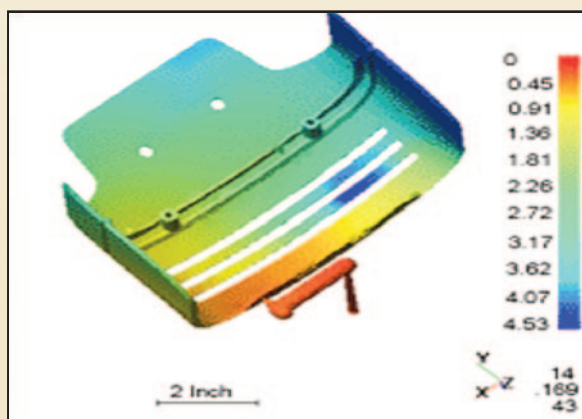
We have highly qualified engineers in-house that will take a personalized approach to each project. Coupling a wealth of experience with creative design advances, our engineering group will establish exact specifications for your particular application. Using computer-aided design (CAD) we'll combine our ideas with yours to develop viable, productive solutions to your performance criteria. In addition, we have complete tool room capabilities including state-of-the-art CNC equipment.

Finite Element Analysis (FEA)



When modifying or designing a new part, Davies uses a computer model of a material or design that is stressed and analyzed for specific results. FEA uses a complex system of points called nodes that create a mesh and are programmed to contain the material and structural properties to define how the part will react under certain loading conditions. This allows Davies' engineers to verify whether or not a proposed design will perform to the client's specifications prior to molding the part, saving customers unnecessary expense and lost time.

Mold Flow Simulation



Plastics simulation software allows our engineers to determine the manufacturability of your part in the early stages of the design. This is beneficial because it helps prevent any potential problems such as air traps, weld lines, warpage, shrinkage, and sinks that can cause delays in production and also ensures that the material chosen will provide the best performance, longevity, and the highest cost savings for your project.

Commitment To...

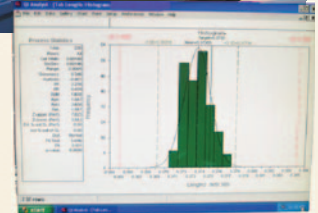
Quality Control

With a longstanding reputation for quality products, Davies views quality as everyone's responsibility. From our suppliers to our employees, from production systems to our management team, quality awareness is universal and pervasive. The quality control that begins at our receiving dock with resin and insert delivery continues through our entire molding and finishing operations. All incoming components and materials must meet strict specifications, along with continual in-process inspection audits and outgoing quality control standards.



As a part of our continual in-process inspection, we perform a quality check at the following times during production:

Process parameter set-up - First piece analysis- In-process analysis - Final audit. By doing a thorough inspection at these stages, you can be sure you will receive the best plastic part possible.



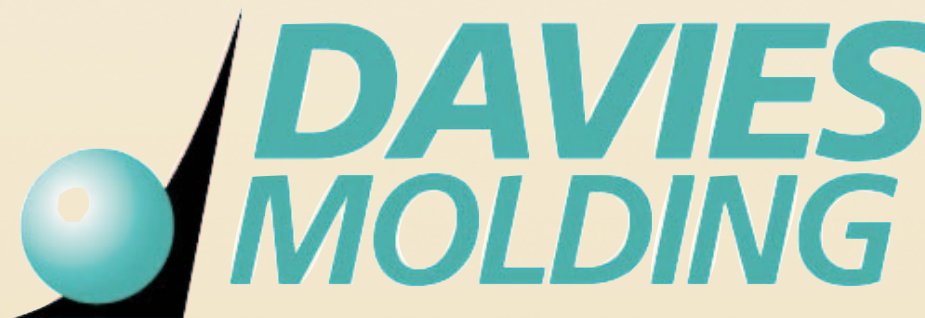
Davies Molding is also ISO 9001:2000 certified, so you can rest assured knowing that quality will be an important part of our process, from concept all the way through production. A copy of our certificate is available upon request.

Customer Service

An essential part of our customer service relationship is the continuing program of providing specialized services, assuring satisfaction, and maintaining long lasting business relationships. Spearheading our customer-first approach is a dedicated and knowledgeable staff of customer service and marketing personnel. Please give one of our trained professionals a call today.



Click on CD or go to www.daviesmolding.com/catalog/default.html



ISO 9001 : 2000 CERTIFIED

350 Kehoe Blvd. · Carol Stream, IL 60188 · 800-544-9208 · fax 630-510-9944
www.daviesmolding.com · email info@daviesmolding.com